

**Fellowes**



**Volo**  
Wall

# Modular Walls

*Fellowes has been in the Modular Wall business for over 50 years. The three Modular Wall Systems — TrendWall, Volo and Volo Frameless — represent a full range of pricing, function and aesthetics. All three lines seamlessly combine to create unique solutions that meet budgetary and functional requirements while offering almost unlimited flexibility to bring a designers vision to life.*

TrendWall®



Volo®



Volo® Frameless



*Whatever your vision, Volo® brings it to life with speed, ease and performance.*

## Your Volo, Your Vision

---

What's your perfect space? Maybe it's a quiet, traditional private office, or a dramatic statement in metal and glass. Maybe it's a creative hub where people freely sketch ideas floor-to-ceiling — or just a simple, practical shared space in a beautiful environment. Whatever your vision, Volo® brings it to life with speed, ease and performance.

With its unitized, modular construction and extensive design options Volo® offers a fast, flexible and sustainable approach to interior architectural space planning.





*Design the space to support your brand, your preferences and your needs — Volo offers the freedom to create.*

## Tailored Solutions

---

A well designed workplace offers people a variety of settings for collaboration, socializing, focused work and quiet time. Volo creates spaces with a range of visual and acoustic privacy to suit a spectrum of needs, from complete enclosure to total transparency, including quiet zones that rival drywall.

Choose the traditional look of custom millwork, or make a bold, graphic statement — the expansive range of aesthetic and functional design options makes it easy to do it all.



# Integrate Your Interior

---

Volo Walls complement any architectural interior. Attention to detail is evident in the crisp lines, precise reveals, fit and finish. The system has the flexibility to accommodate a full range of site wall and floor conditions for beautiful integration with any built environment.



# Acoustical Performance

---

Tailor your space to achieve the acoustic privacy you desire and create quiet areas for working or meeting. Depending on the materials and design, you can realize an STC rating of up to 43, comparable to full-height, insulated drywall.



Volo can provide a quiet retreat (in a very small footprint) for heads-down concentration or private conversation.

## Volo Offers Value

---

Volo looks and performs as well or better than higher-priced architectural walls. Its unitized panels install quickly and can be moved and re-used as your needs change, with minimal impact to ceilings and floors. It may also save you tax dollars since Modular walls are often classified as "tangible property" which may be depreciated significantly quicker than drywall's 39 years.





# Options and Details

## Base Options



Aluminum Base provides a clean, architectural look.



4" Vinyl Base frames the panel and resembles a commercial cove base.



6" Vinyl Base accommodates horizontal modular power.

## Ceiling Options



Reveal Crown creates a subtle ceiling attachment transition.



Traditional Crown stands slightly proud of the wall panel. Required for freestanding applications.

## Tile Options



Slim-profile Inserts offer many decorative and functional options.

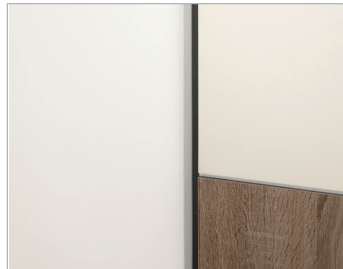


Outserts sit slightly proud of the frame and display a subtle 1/4" reveal.

## Wall Start Options



Adjustable Wall Starts provide flexibility to cleanly attach and adjust to walls, columns, and other architectural conditions.



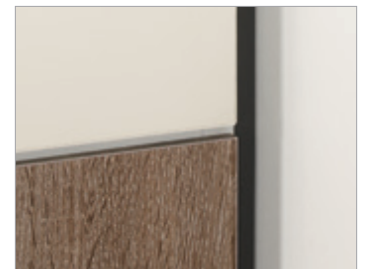
Reveal Wall Starts provide a subtle, recessed wall interface.

## Frameless + Framed Glazed Panels



Volo offers Clear, Low Iron, Frost, magnet-friendly, Back Painted glass and writable glazing options.

## Acoustics



Volo has the capacity to provide acoustic privacy as good as or surpassing drywall.

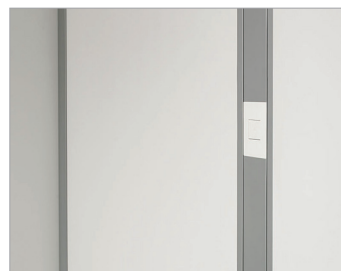
## Power + Data



Inline Connectors support power and data vertically for access at multiple heights.

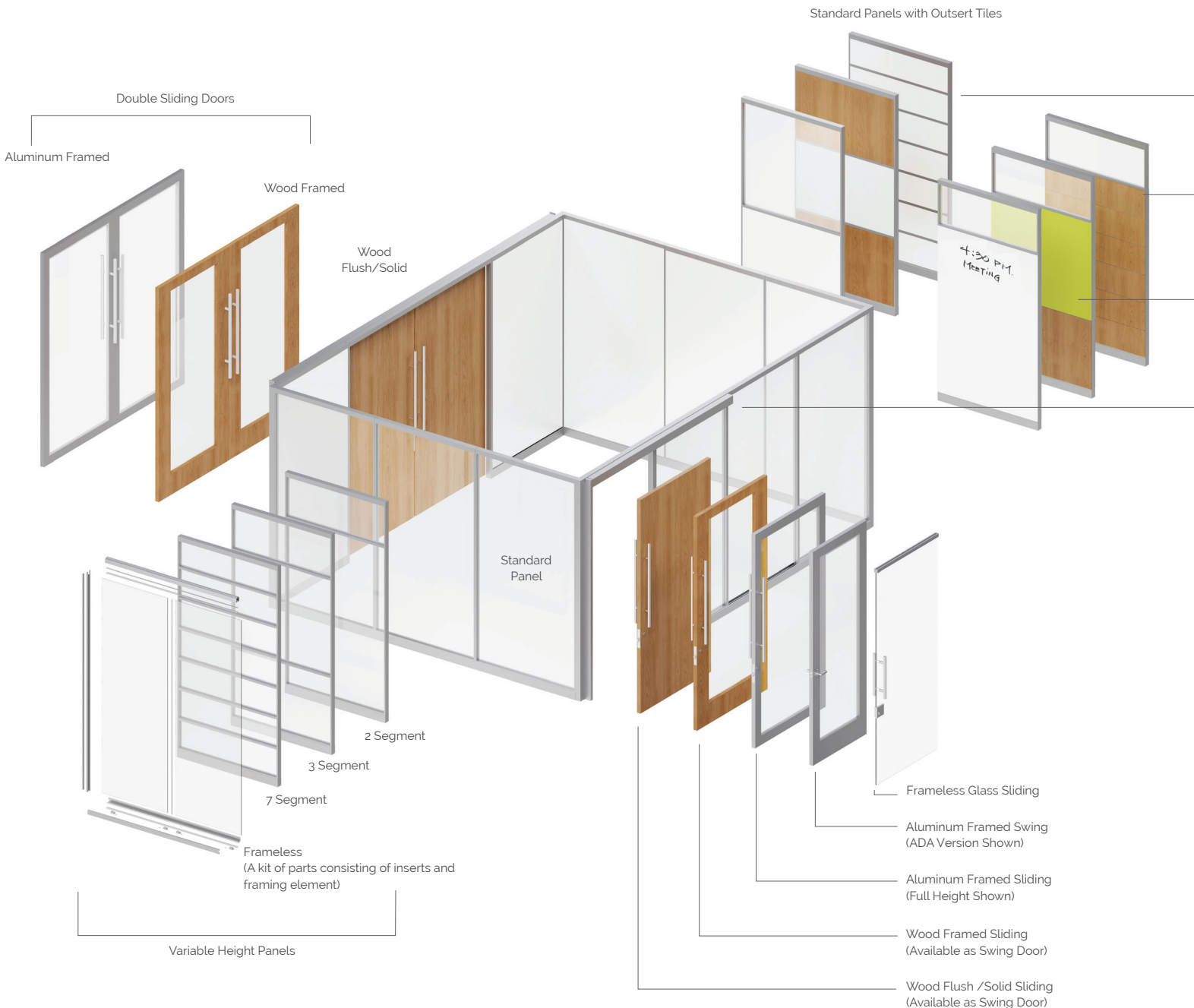


Power and data is distributed and accessed horizontally in the 6" base option.



Inline Connectors can be specified with factory-cut openings to accommodate your choice of components.

# Visualize Your Volo



**Insert Tiles** create an extra-slim profile, revealing aluminum frame elements for a contemporary aesthetic. Choose Vinyl, Laminate, Veneer and Tackable Tiles for functional and design flexibility.

**Outsert Tiles** are slightly proud of the frame, with a subtle 1/4" surrounding reveal. Choose from Laminate, Veneer, Glass Marker Board and colorful Back Painted Glass Tiles to meet your specific needs.

**Surface Materials** — Find images and details about the extensive offering of Volo surface materials at [www.fellowes.com](http://www.fellowes.com).

PANEL SEGMENTATION allows up to 7 Tiles of identical or varied materials on each side of the panel. Outsert and Insert Tiles can blend for maximum aesthetic and functional versatility. Different tile configurations can be specified for each side of a panel.

PANEL FRAMES can be specified from 88" up to 120" high in 1/2" increments, and from 6" to 48" wide in 1/8" increments. Frame elements are available in any of Trendway's standard Systems paint colors or in an anodized aluminum finish.

CENTER-MOUNT GLAZING TILES provide clear, frosted and decorative options. Choose privacy, visibility, pattern, color or writability. They can be specified up to 60" wide.

DOORS are available in Single or Double Sliding, or Swing styles in full and partial heights. Choose Flush Wood, Full Lite Wood or Aluminum Framed styles for Swing and Sliding Doors. A Sliding Frameless Glass Door is also available.

## Doors



Double Glass Sliding Door



Frameless Glass Sliding Door



Aluminum Framed Sliding Door



Wood Flush Sliding Door \*\*



Wood Full Lite Sliding Door



Swing Door

## Pull + Lock Options



18" Sliding Door Post Pull\*\*



18" Sliding Door Post Pull with standard lock (non-SFIC). Small Format Interchangeable Lock (SFIC) available.



Sliding Door with Patch Lock. Option for Frameless Glass Sliding Door only.



Swing Door Lever Set with non-SFIC lock. Passage set available.



Swing Door Lever Set shown with SFIC lock option (COM core).

*\*\*36" Sliding Door Post Pull also available.*

*\*\*72" Ladder Pull available for Wood and 4-4-4 Aluminum Framed Sliding Door.*

**Fellowes** | FAMILY BUSINESS  
SINCE 1917



To contact a Fellowes® customer service representative, call 800-833-3746.

© 2023 Fellowes, Inc.